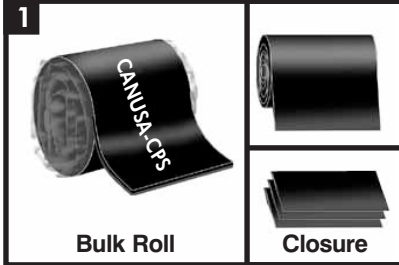


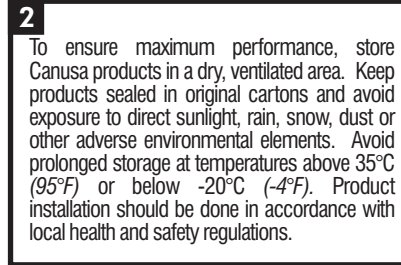
CanusaWrap™ Two-piece protective bulk roll with separate closure

Product Description



CanusaWrap™ is typically shipped in bulk rolls. The adhesive is protected from contamination by an inner liner. Closures are shipped either in bulk rolls or pre-cut.

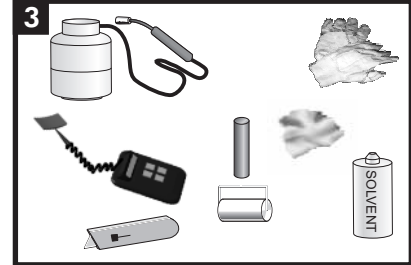
Storage & Safety Guidelines



To ensure maximum performance, store Canusa products in a dry, ventilated area. Keep products sealed in original cartons and avoid exposure to direct sunlight, rain, snow, dust or other adverse environmental elements. Avoid prolonged storage at temperatures above 35°C (95°F) or below -20°C (-4°F). Product installation should be done in accordance with local health and safety regulations.

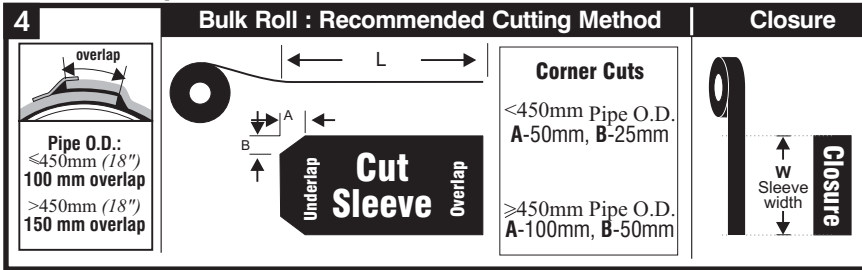
These installation instructions are intended as a guide for standard products. Consult your Canusa representative for specific projects or unique applications.

Equipment List



Propane tank, hose, torch & regulator
Appropriate tools for surface abrasion
Knife, roller, rags & approved solvent cleanser
Digital thermometer with suitable probe
Standard safety equipment; gloves, goggles, hard hat, etc.

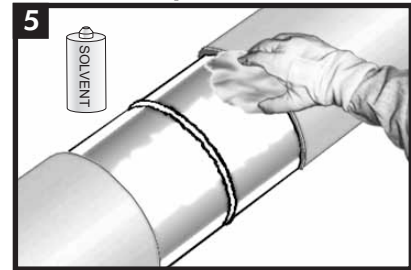
Product Preparation Guidelines



As a guideline, cut the required lengths of Sleeve material (L) and Closure material (W) from the bulk roll as follows
 $L = \text{Coated Pipe circumference} + \text{overlap dimension}$
 $W = \text{Sleeve Width}$

Ensure that the sleeve and closure are not damaged or contaminated. Trim corners as shown.
 Please see "CanusaWrap™ Sleeve Cutting Guideline" for more information on alternative cutting methods.

Surface Preparation

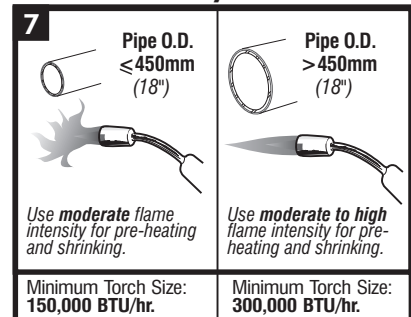


Ensure that the PE coating edges are beveled to 30°. Clean exposed steel and adjacent pipe coating with a solvent cleanser to remove the presence of oil, grease, and other contaminants.

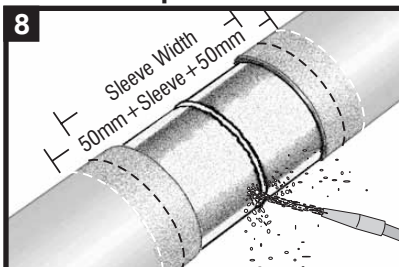
Surface Preparation and Pre-Heat Chart

6	Standard Sleeves		Surface Preparation				Min. Pre-Heat Temp.	
			SIS Standard		SSPC Standard		°C	(°F)
		Minimum	Preferred	Minimum	Preferred			
Mastic	WLG	WTG	St2	Sa2	SP2	SP6	50	(122)
	WLC	WTC	St2	Sa2	SP2	SP6	60	(140)
	WLS	WTS	St2	Sa2	SP2	SP6	65	(150)
	WLO	WTO	St2	Sa2	SP2	SP6	75	(167)
	WLON	WTON	St2	Sa2	SP2	SP6	75	(167)
	WLNN	WTNN	St3	Sa2½	SP3	SP10	90	(195)
Hot Melt	WLA		St3	Sa2½	SP3	SP10	60	(140)
	WLAS		St3	Sa2½	SP3	SP10	90	(195)

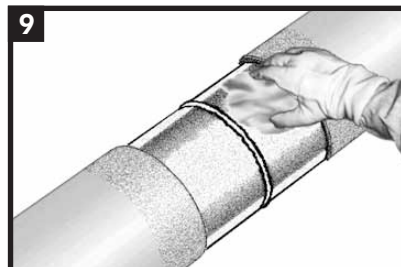
Flame Intensity & Torch Size



Surface Preparation

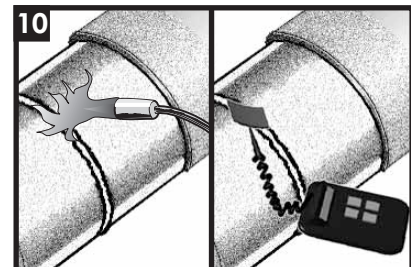


Ensure that the pipe is dry before cleaning. Prepare the steel joint area using the Surface Preparation and Pre-Heat Chart as a guideline. Lightly abrade the pipe coating adjacent to the cutback area to a distance of 50mm (2") beyond each end of the sleeve width.



Wipe clean or air blast the steel and pipe coating to remove foreign contaminants.

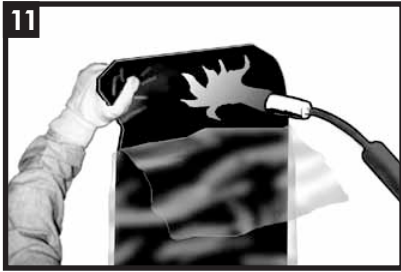
Pre-Heat



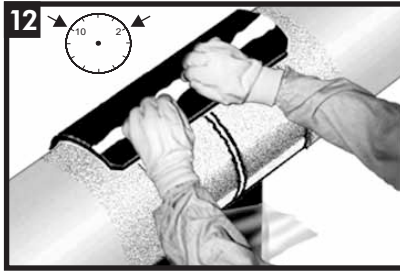
Pre-heat the joint area to the minimum required temperature (see Surface Preparation & Pre-Heat Chart). Using a temperature measuring device, ensure that the correct temperature is reached on the steel and at least 50mm (2") on each side of the sleeve.

CanusaWrap™

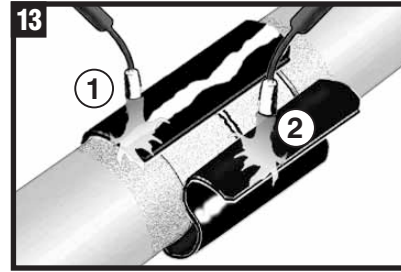
Sleeve Installation



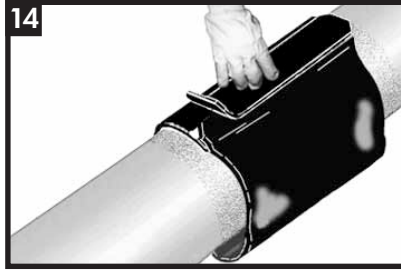
Partially remove the release liner and gently heat the underlap approximately 150 mm (6") from the edge.



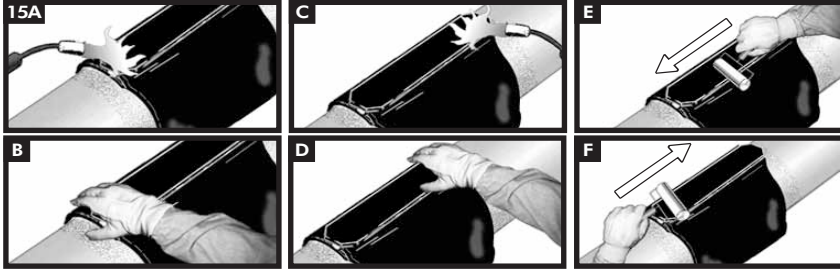
Centre the sleeve over the joint so that the sleeve overlaps between the 10 and 2 o'clock positions. Press the underlap firmly into place and remove the remaining release liner.



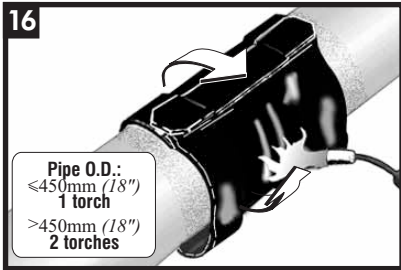
Wrap the sleeve loosely around the pipe, ensuring the appropriate overlap. Gently heat the backing of the underlap and the adhesive side of the overlap. Press the overlap into place.



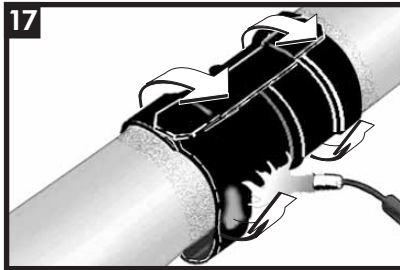
Remove any release liners from the Closure Strip. Centre the closure on the overlapping sleeve. Press down firmly.



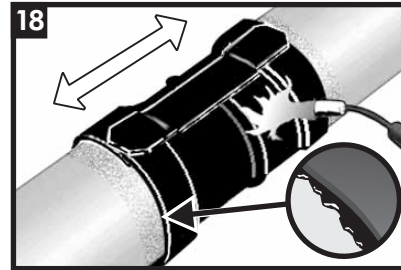
Gently heat the closure and pat it down with a gloved hand. Repeating this procedure, move from one side to the other. Smooth any wrinkles by gently working them outward from the centre of the closure with a roller.



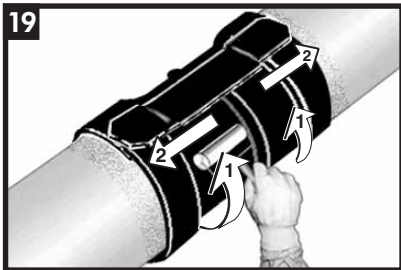
Using the appropriate sized torch, begin at the centre of the sleeve and heat circumferentially around the pipe. Use broad strokes. If utilizing two torches, operators should work on opposite sides of pipe.



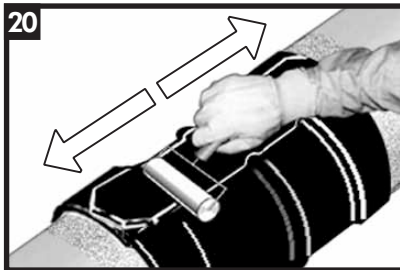
Continue heating from the centre toward one end of the sleeve until recovery is complete. In a similar manner, heat and shrink the remaining side.



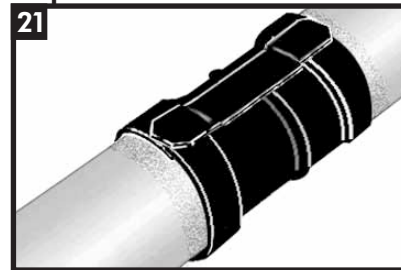
Shrinking has been completed when the adhesive begins to ooze at the sleeve edges all around the circumference. Finish shrinking the sleeve with long horizontal strokes over the entire surface to ensure a uniform bond.



While the sleeve is still hot and soft, use a hand roller to gently roll the sleeve surface and push any trapped air up and out of the sleeve, as shown above. If necessary, reheat to roll out air.



Continue the procedure by also firmly rolling the closure with long horizontal strokes from the weld outwards.



Visually inspect the installed sleeve for the following:

- Sleeve is in full contact with the steel joint.
- Adhesive flows beyond both sleeve edges.
- No cracks or holes in sleeve backing.

Inspection

Backfilling Guidelines

After shrinking is complete, allow the sleeve to cool for 2 hours prior to lowering and backfilling. To prevent damage to the sleeve, use selected backfill material, (no sharp stones or large particles) otherwise an extruded polyethylene mesh or other suitable shield should be used.



A SHAWCOR COMPANY

Canada

CANUSA-CPS
a division of SHAWCOR LTD.
25 Bethridge Road
Rexdale, Ontario
M9W 1M7,
Canada
Tel: +1 (416) 743-7111
Fax: +1 (416) 743-5927

U.S.A./Latin America

CANUSA-CPS
a division of SHAWCOR INC.
2408 Timberloch Place
Building C-8
The Woodlands, Texas
77380, U.S.A.
Tel: +1 (281) 367-8866
Fax: +1 (281) 367-4304

Europe/Middle East

CANUSA-CPS
a division of Canusa Systems Ltd.
Unit 3, Sterling Park
Gatwick Road
Crawley, West Sussex
England RH10 9QT
Tel: +44 (1293) 541254
Fax: +44 (1293) 541777

www.canusacps.com

Asia/Pacific

CANUSA-CPS
BrederoShaw (S) Pte Ltd
101 Thomson Road
#17-01/02, United Square
Singapore
307591
Tel +65-6732-2355
Fax +65-6732-9073

Canusa warrants that the product conforms to its chemical and physical description and is appropriate for the use stated on the installation guide when used in compliance with Canusa's written instructions. Since many installation factors are beyond our control, the user shall determine the suitability of the products for the intended use and assume all risks and liabilities in connection therewith. Canusa's liability is stated in the standard terms and conditions of sale. Canusa makes no other warranty either expressed or implied. All information contained in this installation guide is to be used as a guide and is subject to change without notice. This installation guide supersedes all previous installation guides on this product. E&OE